



TECHNICAL DATA / **DONNÉES TECHNIQUES** / **DATI TECNICI**

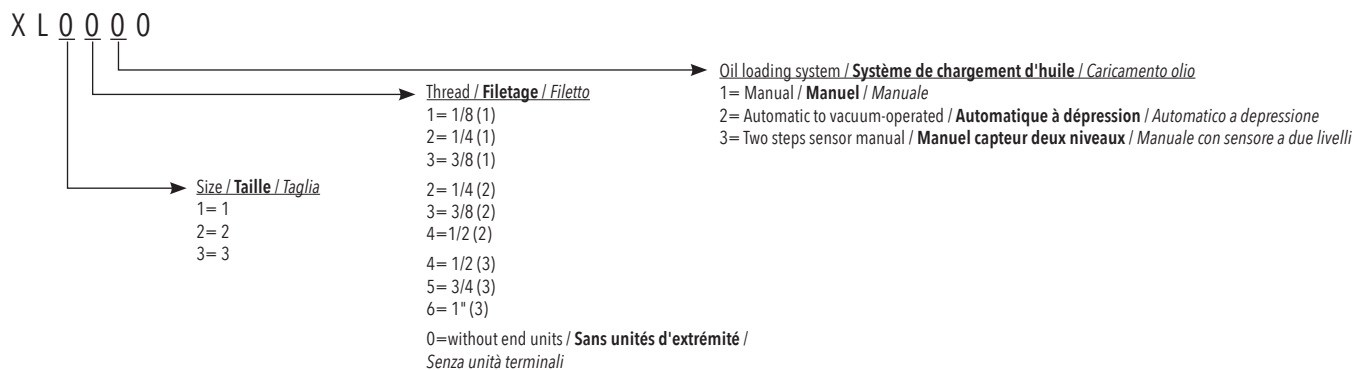
Fluid / Fluide / <i>Fluido</i>	Air / Air / <i>Aria</i>		
Maximum pressure / Pression Max / <i>Pressione Max</i>	15 bar		
Temperature / Température / <i>Temperatura</i>	-10° C / +50° C		
Filtration grade / Grade de filtration / <i>Grado di filtrazione</i>	5 - 20 - 50µm		
6 bar flow rate with Δp 1bar / Débit à 6 bar avec Δp à 1bar / <i>Portata a 6 bar con Δp 1bar</i>	1=2600 NI/min	2=5600NI/min	3=8200NI/min
Bowl capacity / Volume / <i>Capacità tazza</i>	1=22cm ³	2=46cm ³	3=89,5cm ³
Wall clamping screws / Vis pour fixation / <i>Viti per fissaggio</i>	1=M4X14	2=M5X18	3=M6X20
Recommended oil / Huile / <i>Olio consigliato</i>	Classe ISO 22 a Norma ISO 3448		

STANDARD PRODUCTS / **PRODUIT STANDARD** / **PRODOTTI STANDARD**

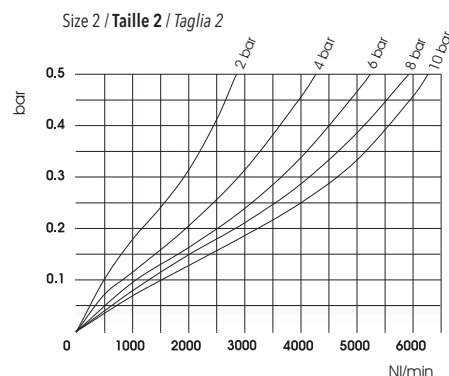
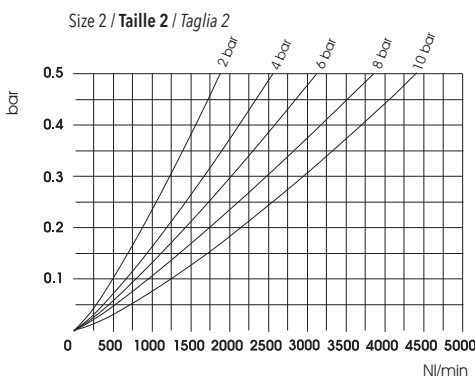
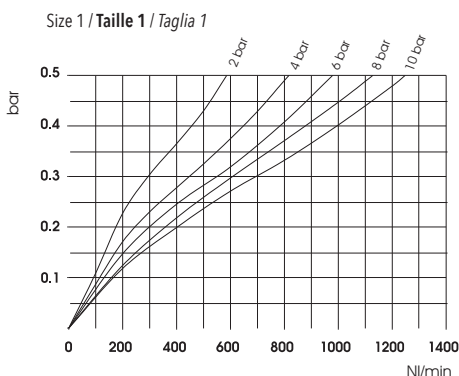
Code Code Codice	Size Taille Taglia	Thread Filetage Filetto	Flow rate Débit Portata	Oil load Graisseur Carico olio
XL1210	1	1/4	2600NI/min	M
XL1310	1	3/8	2600NI/min	M
XL1320	1	3/8	2600NI/min	A
XL2310	2	3/8	5600NI/min	M
XL2410	2	1/2	5600NI/min	M
XL2420	2	1/2	5600NI/min	A
XL3510	3	3/4	8200NI/min	M
XL3610	3	1"	8200NI/min	M
XL3620	3	1"	8200NI/min	A
XL3630	3	1"	8200NI/min	M2L

M: Manual / **Manuel** / *Manuale*
 A: Automatic to vacuum-operated
Automatique à dépression / *Automatico a depressione*
 M2L: Two steps sensor manual / **Manuel capteur deux niveau**
Manuale con sensore a due livelli

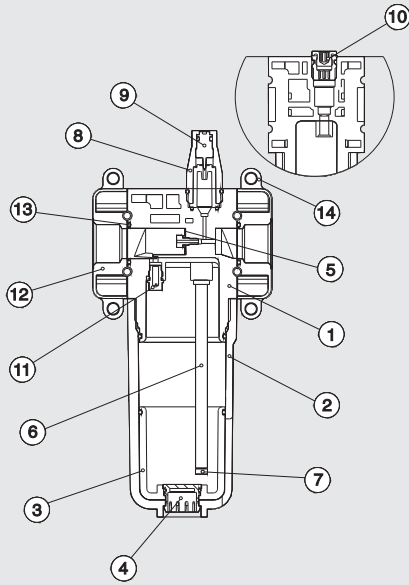
ORDERING CODE / **CODIFICATION** / **CHIAVE DI CODIFICA**



FLOW CHARACTERISTICS / **COURBES DE DEBIT** / **CARATTERISTICHE DI FLUSSO**

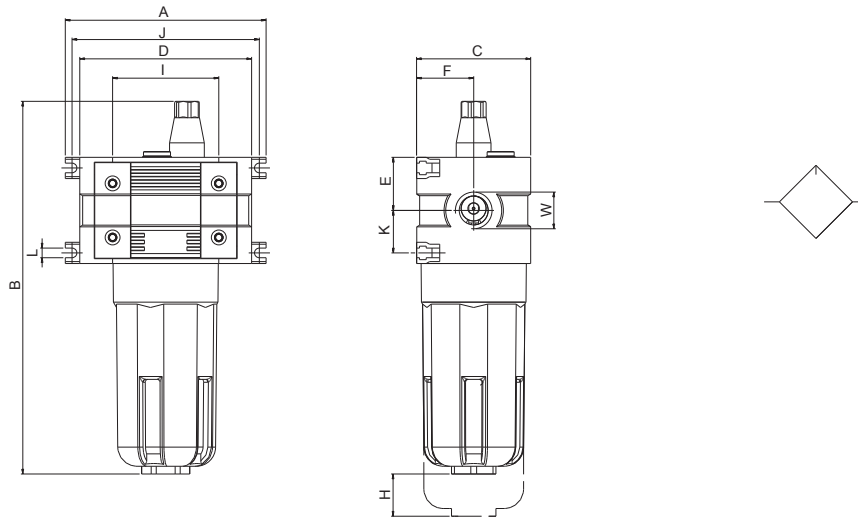


COMPONENTS / COMPOSANTS / COMPONENTI



1	Body / Corps / <i>Corpo</i>	polymer / polymère / <i>polimero</i>
2	bowl / bol / <i>tazza</i>	polymer / polymère / <i>polimero</i>
3	glass / verre / <i>bicchiere</i>	polymer / polymère / <i>polimero</i>
4	plug / bouchon / <i>tappo</i>	polymer / polymère / <i>polimero</i>
5	membrane / membrane / <i>membrana</i>	
6	tube / tube / <i>tubo</i>	Pa11
7	small filter / filtre / <i>filtrino</i>	
8	cupola / dome / <i>dome</i>	polymer / polymère / <i>polimero</i>
9	pin / pin / <i>spillo</i>	brass / laiton / <i>ottone</i>
10	plug / bouchon / <i>tappo</i>	brass / laiton / <i>ottone</i>
11	diffuser / diffuseur / <i>diffusore</i>	brass / laiton / <i>ottone</i>
12	end part / terminale / <i>terminale</i>	zama / zamak / <i>zama</i>
13	o-ring / joint torique	NBR
14	fixing part / élément de fixation / <i>elemento di fissaggio</i>	zama / zamak / <i>zama</i>

DIMENSIONS / DIMENSIONS / DIMENSIONI



	A	B	C	D	W	E	F	H	I	J	K	L	M	O	P
Size 1	75,5	162	45	72	1/8-1/4-3/8	21	22,5	39	43	48,5	26	M4	29	26	32,5
Size 2	89	195	59	89	1/4-3/8-1/2	27,5	28,5	48	55	69	32,5	M5	29	32	38,5
Size 3	106	214	70	100	1/2-3/4-1	32,5	35	50	65	79	38	M6	29	38,5	45

ELECTRICAL DATA OIL LOADING SYSTEM TWO STEPS SENSOR MANUAL

SCHEMA ELECT. NIVEAU D'HUILE AVEC VISUALISATION MANUELLE / SCHEMI ELETTRICI CARICAMENTO MANUALE OLIO A DUE LIVELLI

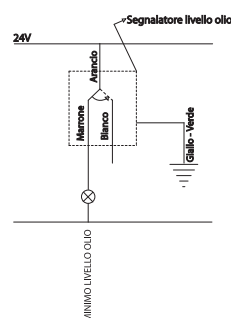
Cable length / **Longueur de câble** / *Lunghezza cavo*: 1500 mm

Current / **Courant** / *Corrente*: 0.5 A

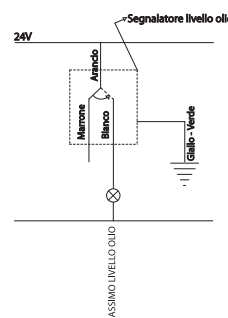
Voltage / **Tension** / *Tensione*: <24V

Capacity / **Capacité** / *Potenziale*: 10W

minimum level
signal niveau mini
segnale al livello minimo



maximum level
signal niveau maxi
segnale al livello massimo



minimum and maximum level oil
Niveau d'huile mini et maxi
segnale livello olio al minimo e al massimo

