

LINE 042 1/4" | FR+L UNITS

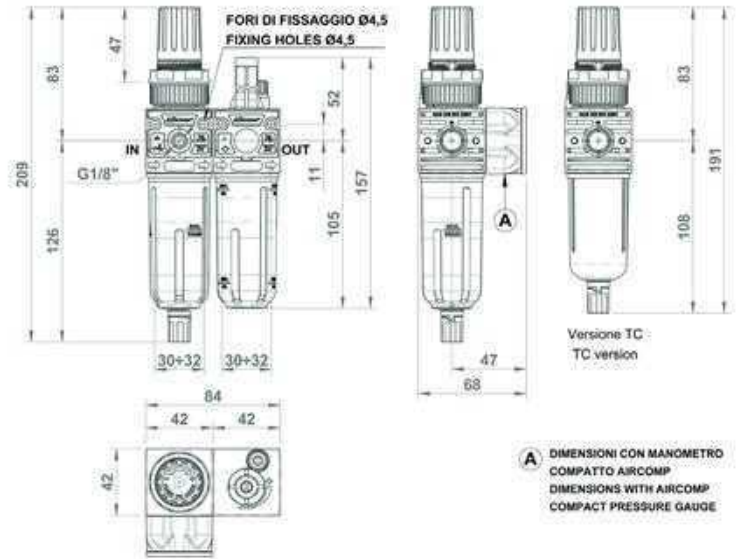
AIR PREPARATION

VALVES

CYLINDERS

FITTINGS

WATER PREPARATION



GENERAL FEATURES

Unit consisting of Filter regulator and Lubricator.

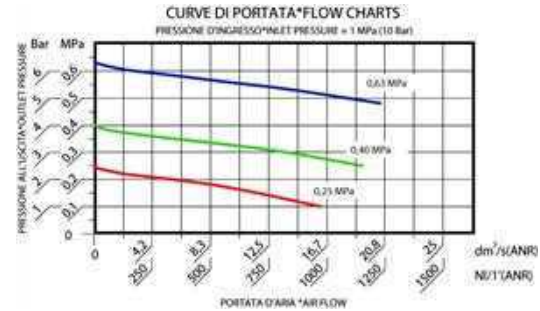
GENERAL TECHNICAL DATA

Pressure range	0-4; 0-8; 0-12 Bar
Maximum inlet pressure	16 Bar
Drain working pressure	mod. SS: 0,5 - 16 Bar mod. SA: 1,5 - 10 Bar mod. SAD: 2 - 12 Bar
Filtering degree	5 micron; 20 micron
Reference flow rate (P1= 6,3 bar ΔP= 1 bar)	980 NI/min
Working temperature (a 10 bar)	-5 / +50°C*
Max Torque G1/4" IN-OUT	25 Nm
Max torque gauge port	round: 1 Nm compact: manual
Weight	0,32 kg

Below 3°C the air of the circuit must be free from humidity

ORDERING CODE

CODE	REF.
042.06.*****	FR+L 1/4" 042 20 08 R TT SS
042.06.00052	FR+L 1/4" 042 20 12 R TT SS
042.06.00115	FR+L 1/4" 042 5 08 R TT SS
042.06.00116	FR+L 1/4" 042 5 12 R TT SS
042.06.00124	FR+L 1/4" 042 20 08 R TC SS
042.06.00132	FR+L 1/4" 042 20 12 R TC SS
042.06.00133	FR+L 1/4" 042 5 08 R TC SS
042.06.00134	FR+L 1/4" 042 5 12 R TC SS
042.06.00500	FR+L 1/4" 042 20 08 R TT SS VL
042.06.00504	FR+L 1/4" 042 20 12 R TT SS VL
042.06.00072	FR+L 1/4" 042 20 08 R PE SS
042.06.00126	FR+L 1/4" 042 20 12 R PE SS
042.06.00128	FR+L 1/4" 042 5 08 R PE SS
042.06.00129	FR+L 1/4" 042 5 12 R PE SS
042.06.00193	FR+L 1/4" 042 20 08 R PE SS VL
042.06.00194	FR+L 1/4" 042 20 12 R PE SS VL
Float type automatic drain version.	
042.06.00151	FR+L 1/4" 042 20 08 R TT SA
042.06.00153	FR+L 1/4" 042 20 12 R TT SA
042.06.00157	FR+L 1/4" 042 20 08 R PE SA
042.06.00159	FR+L 1/4" 042 20 12 R PE SA
"Differential" automatic drain version.	
042.06.00191	FR+L 1/4" 042 20 08 R TT SAD
042.06.00192	FR+L 1/4" 042 20 12 R TT SAD
042.06.00501	FR+L 1/4" 042 20 08 R PE SAD
042.06.00505	FR+L 1/4" 042 20 12 R PE SAD



GUIDE TO REFERENCES

FR+L 1/4" 042 20 08 R PE SS

Product FR+L = Filter regulator + Lubricator	Condensate Drain SS = Semiautomatic (standard) SA = Automatic float type SAD = Automatic differential S18 = Open seat 1/8 F
Connection 1/4" = G 1/4" 3/8" = G 3/8" 1/2" = G 1/2" 3/4" = G 3/4" 1" = G 1"	Bowl TT = Transparent (Line 042 only) TC = Short transparent (Line 042 only) PE = With outer guard
Line 042 050 052 075 080 095	Version R = Relieving
Filtering element 5 = 5 micron 20 = 20 micron	Range of pressure 04 = 0 - 4 Bar 08 = 0 - 8 Bar 12 = 0 - 12 Bar



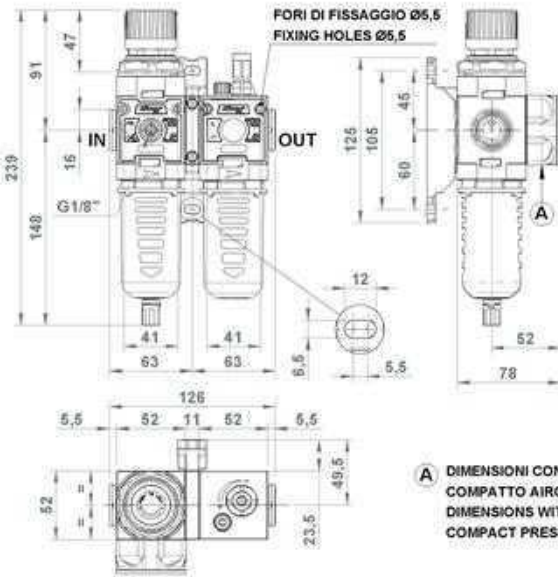
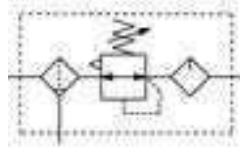
WOULD YOU LIKE TO ORDER

THE REGULATOR COMPLETE WITH GAUGE?

Replace 0 with "M" the the 6th digit of the part nr. for example:

042.06.M0072 FR+L 1/4" 042 20 08R PE SS + GAUGE

LINE 050 3/8-052 1/2 | FR + L UNITS



GENERAL FEATURES

Unit consisting of Filter regulator and Lubricator.

GENERAL TECHNICAL DATA

INLET-OUTLET connections	Line 050 3/8" - Line 052 1/2"
Pressure range	0-4; 0-8; 0-12 Bar
Working pressure	0,5 - 12,5 Bar
Drain working pressure	model SA: 1,5 - 10 Bar model SAD: 2 - 12 Bar
Filtering degree	5 micron; 20 micron
Reference flow rate (P1= 6,3 bar ΔP= 1 bar)	1.500 NI/min
Working temperature (a 10 bar)	-5 / +50°C*
Max Torque IN-OUT	3/8" 60 Nm - 1/2" 80 Nm
Max torque gauge port	round: 10 Nm compact: manual
Weight	0,70 kg

Below 3°C the air of the circuit must be free from humidity

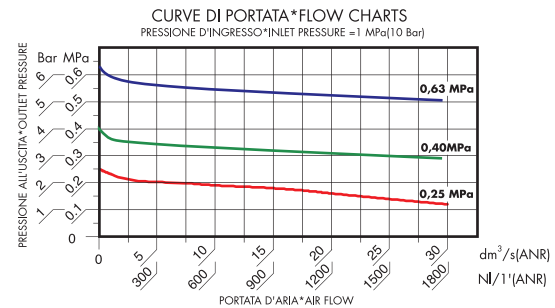
ORDERING CODE

LINE 050-3/8

CODE	REF.
050.16.00025	FR+L 3/8" 050 20 08 R PE SS
050.16.00001	FR+L 3/8" 050 20 12 R PE SS
050.16.00036	FR+L 3/8" 050 5 08 R PE SS
050.16.00037	FR+L 3/8" 050 5 12 R PE SS
050.16.00501	FR+L 3/8" 050 20 08 R PE SS VL
Float type automatic drain version.	
050.16.00057	FR+L 3/8" 050 20 08 R PE SA
050.16.00059	FR+L 3/8" 050 20 12 R PE SA
"Differential" automatic drain version.	
050.16.00083	FR+L 3/8" 050 20 08 R PE SAD
050.16.00084	FR+L 3/8" 050 20 12 R PE SAD

LINE 052-1/2

CODE	REF.
052.16.00025	FR+L 1/2" 052 20 08 R PE SS
052.16.00001	FR+L 1/2" 052 20 12 R PE SS
052.16.00036	FR+L 1/2" 052 5 08 R PE SS
052.16.00037	FR+L 1/2" 052 5 12 R PE SS
052.16.00501	FR+L 1/2" 052 20 08 R PE SS VL
Float type automatic drain version.	
052.16.00057	FR+L 1/2" 052 20 08 R PE SA
052.16.00059	FR+L 1/2" 052 20 12 R PE SA
"Differential" automatic drain version.	
052.16.00063	FR+L 1/2" 052 20 08 R PE SAD
052.16.00064	FR+L 1/2" 052 20 12 R PE SAD



GUIDE TO REFERENCES

FR+L 1/4" 042 20 08 R PE SS

Product FR+L = Filter regulator + Lubricator	Condensate Drain SS = Semiautomatic (standard) SA = Automatic float type SAD = Automatic differential S18 = Open seat 1/8 F
Connection 1/4" = G 1/4" 3/8" = G 3/8" 1/2" = G 1/2" 3/4" = G 3/4" 1" = G 1"	Bowl TT = Transparent (Line 042 only) TC = Short transparent (Line 042 only) PE = With outer guard
Line 042 050 052 075 080 095	Version R = Relieving
Filtering element 5 = 5 micron 20 = 20 micron	Range of pressure 04 = 0 - 4 Bar 08 = 0 - 8 Bar 12 = 0 - 12 Bar

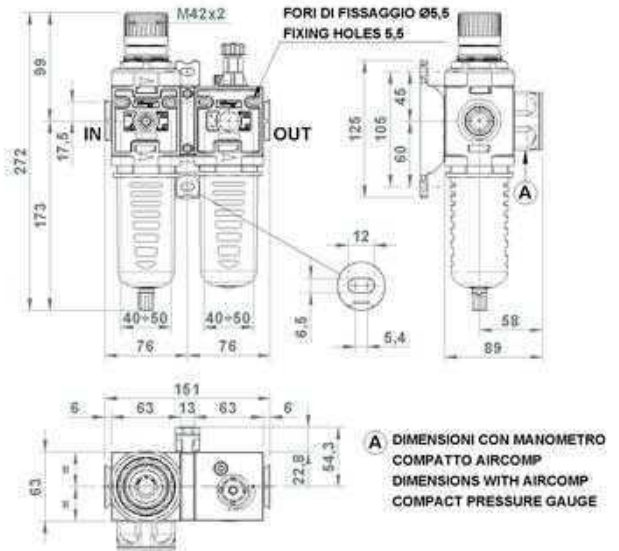
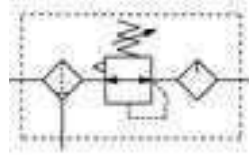


WOULD YOU LIKE TO ORDER THE REGULATOR COMPLETE WITH GAUGE?

Replace 0 with "M" the the 6th digit of the part nr. for example:

050.16.M0025 FR+L3/8" 050 20 08R PE SS + GAUGE

LINE 075 1/2 | FR + L UNITS



GENERAL FEATURES

Unit consisting of Filter regulator and Lubricator.
It combines the functions of filtering, pressure regulation and lubrication of compressed air for industrial application.
Unit featuring big flow rate and regulation sensitivity, filtration and high condensate separation.
Semiautomatic condensate drain supplied as standard (SS).
Available options: float type automatic drain (SA) and differential drain (SAD) that can convey condensate to the outside even when the bowl is pressurized.
Bowl made from hardened polyamide with outer guard.

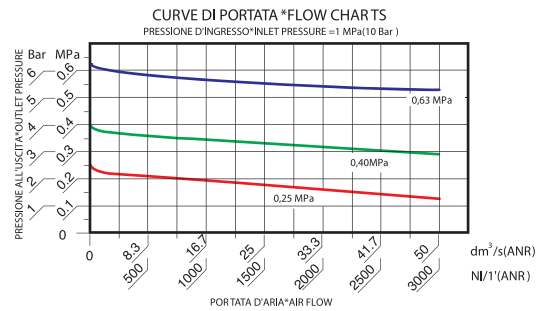
GENERAL TECHNICAL DATA

INLET-OUTLET connections	G1/2"
Pressure range	0-4; 0-8; 0-12 Bar
Working pressure	0,5 - 12,5 Bar
Working pressure with automatic drain	model SA: 1,5 - 10 Bar model SAD: 2 - 12 Bar
Filtering degree	5 micron; 20 micron
Reference flow rate (P1= 6,3 bar ΔP= 1 bar)	2.200 Nl/min
Working temperature (a 10 bar)	-5 / +50°C*
Max Torque IN-OUT	1/2" 80 Nm
Max torque gauge port	round: 10 Nm compact: manual
Weight	0,94 kg

Below 3°C the air of the circuit must be free from humidity

ORDERING CODE

CODE	REF.
075.16.00025	FR+L 1/2" 075 20 08 R PE SS
075.16.00053	FR+L 1/2" 075 20 12 R PE SS
075.16.00065	FR+L 1/2" 075 5 08 R PE SS
075.16.00066	FR+L 1/2" 075 5 12 R PE SS
075.16.00501	FR+L 1/2" 075 20 08 R PE SS VL
Float type automatic drain version.	
075.16.00026	FR+L 1/2" 075 20 08 R PE SA
075.16.00068	FR+L 1/2" 075 20 12 R PE SA
"Differential" automatic drain version.	
075.16.00096	FR+L 1/2" 075 20 08 R PE SAD
075.16.00097	FR+L 1/2" 075 20 12 R PE SAD



GUIDE TO REFERENCES

FR+L 1/4" 042 20 08 R PE SS

Product

FR+L = Filter regulator + Lubricator

Connection

1/4" = G 1/4"
3/8" = G 3/8"
1/2" = G 1/2"
3/4" = G 3/4"
1" = G 1"

Line

042
050
052
075
080
095

Filtering element

5 = 5 micron
20 = 20 micron

Condensate Drain

SS = Semiautomatic (standard)
SA = Automatic float type
SAD = Automatic differential
S18 = Open seat 1/8 F

Bowl

TT = Transparent (Line 042 only)
TC = Short transparent (Line 042 only)
PE = With outer guard

Version

R = Relieving

Range of pressure

04 = 0 - 4 Bar
08 = 0 - 8 Bar
12 = 0 - 12 Bar

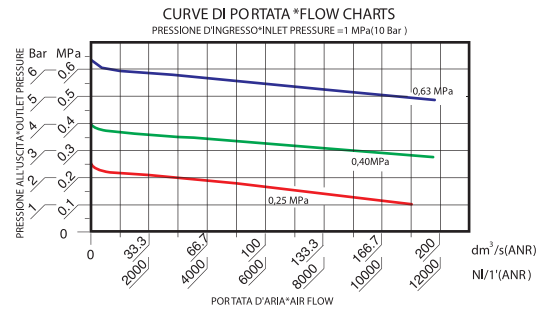
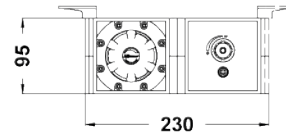
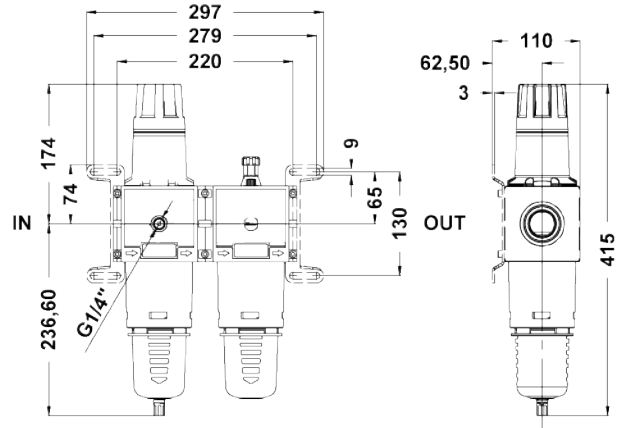
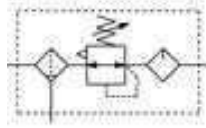


WOULD YOU LIKE TO ORDER THE REGULATOR COMPLETE WITH GAUGE?

Replace 0 with "M" the the 6th digit of the part nr. for example:

075.16.M0025 FR+L1/2" 075 20 08R PE SS + GAUGE

LINE 095 1" | FR+L UNITS



GENERAL FEATURES

Unit consisting of Filter regulator and Lubricator.
It combines the functions of filtering, pressure regulation and lubrication of compressed air for industrial application.
Unit featuring big flow rate and regulation sensitivity, filtration and high condensate separation.
Semiautomatic condensate drain supplied as standard (SS).
Available options: float type automatic drain (SA) and differential drain (SAD) that can convey condensate to the outside even when the bowl is pressurized.
Bowl made from hardened polyamide with outer guard.

GENERAL TECHNICAL DATA

INLET-OUTLET connections	1"
Pressure range	0-4; 0-8; 0-12 Bar
Working pressure	0,5 - 12,5 Bar
Working pressure with automatic drain	model SA: 1,5 - 10 Bar model SAD: 2 - 12 Bar
Filtering degree	5 micron; 20 micron
Reference flow rate	(P1= 6,3 bar P= 1bar) : 8.000 NI/min
Working temperature (a 10 bar)	-5 / +50°C*
Max Torque IN-OUT	1" 80 Nm
Max torque gauge port	10 Nm
Weight	3,37 Kg

Below 3°C the air of the circuit must be free from humidity

ORDERING CODE

CODE	REF.
095.06.00002	FR+L 1" 095 20 04 R PE SS
095.06.00001	FR+L 1" 095 20 08 R PE SS
095.06.00003	FR+L 1" 095 20 12 R PE SS
095.06.00005	FR+L 1" 095 5 04 R PE SS
095.06.00004	FR+L 1" 095 5 08 R PE SS
095.06.00006	FR+L 1" 095 5 12 R PE SS
Float type automatic drain version.	
095.06.00007	FR+L 1" 095 20 08 R PE SA
095.06.00009	FR+L 1" 095 20 12 R PE SA
"Differential" automatic drain version.	
095.06.00013	FR+L 1" 095 20 08 R PE SAD
095.06.00014	FR+L 1" 095 20 12 R PE SAD

GUIDE TO REFERENCES

FR+L 1/4" 042 20 08 R PE SS

Product

FR+L = Filter regulator + Lubricator

Connection

1/4" = G 1/4"
3/8" = G 3/8"
1/2" = G 1/2"
3/4" = G 3/4"
1" = G 1"

Line

042
050
052
075
080
095

Filtering element

5 = 5 micron
20 = 20 micron

Condensate Drain

SS = Semiautomatic (standard)
SA = Automatic float type
SAD = Automatic differential
S18 = Open seat 1/8 F

Bowl

TT = Transparent (Line 042 only)
TC = Short transparent (Line 042 only)
PE = With outer guard

Version

R = Relieving

Range of pressure

04 = 0 - 4 Bar
08 = 0 - 8 Bar
12 = 0 - 12 Bar



WOULD YOU LIKE TO ORDER THE REGULATOR COMPLETE WITH GAUGE?

Replace 0 with "M" the the 6th digit of the part nr. for example:

095.06.M0002 FR+L 1" 095 20 04 R PE SS + GAUGE