

LINE 120 1/8" | MANUAL VALVES



GENERAL FEATURES

Construction	spool valve
Body size	22mm
Body material	technopolymer
Single use	YES
Manifold use	NO
Available functions	3/2; 5/2; 5/3

GENERAL TECHNICAL DATA

Fluid	filtered air with or without lubrication
Connections	1/8"
Temperature Range	-5 / +50°C (23 / 122°F) Please note: Below 3°C the air of the circuit must be free from humidity
Reference Flow Rate	P1= 6 bar; Δ P= 1 bar; 5/2= 670 (l/min), 5/3= 550 (l/min), 3/2= 690 l/min

GUIDE TO REFERENCES

VM 1/8" 22 3 L9 ML NC P

Product

VM = Manual valves

Connection

1/8" = G1/8"

Size

22 = 22 mm

Function

3 = 3/2

5 = 5/2

6 = 5/3

Material

P = Technopolymer

Option

NC = Normally closed

NO = Normally opened

CC = Closed centres

CA = Opened centres

CA = Pressure centre

OO = 5/2

Return

ML = Spring

PM = Pneum. mech. spring

BS = Bistable

ST = Stable on 3 position

RC = Return to centre

MP = Pneumatic spring

Operation

LS = Sensible taste lever

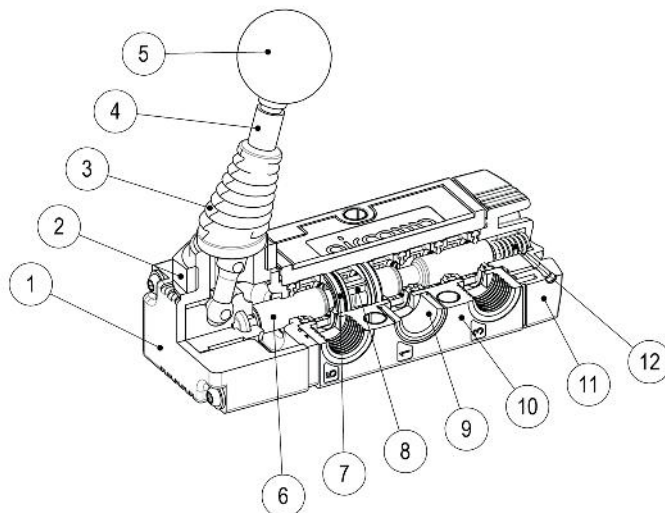
TA = Push-pull

LV = Axial lever

L9 = 90° lever

LC = Short lever

TCA = Short push-pull



USED MATERIALS

1. **Operator body** - PA+FV
2. **Nut** - Galvanized Steel
3. **Cover** - NBR
4. **Lever Pin** - Galvanized Steel
5. **Handle** - Resin
6. **Spool** - Nickel Plated Aluminium
7. **Gasket** - NBR
8. **Spacers** - Brass
9. **Insert** - Brass
10. **Body valve** - PBT+FV
11. **Base command** - PA+FV
12. **Spring** - Stainless steel

LINE 120 VM 1/8" | MANUAL VALVES

3/2 90° LEVER VALVES



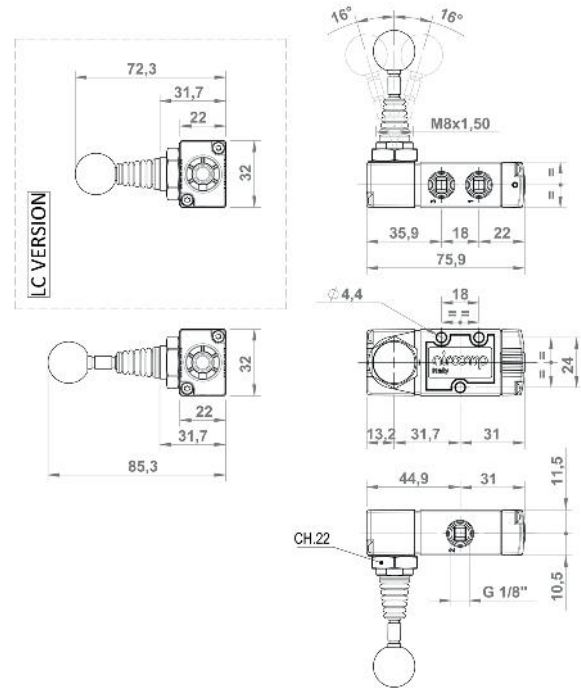
	CODE	REFERENCES
	1202323006	VM 1/8" 22 3 L9 ML NC P
	1202323007	VM 1/8" 22 3 L9 BS OO P
	1202323017	VM 1/8" 22 3 LC BS OO P

TECHNICAL DATA

Working pressure 0÷10 Bar (0÷1,00 MPa)

Weight 0,091 kg

Note: for LC version, please contact our Sales Dept.



5/2 - 5/3 90° LEVER VALVES



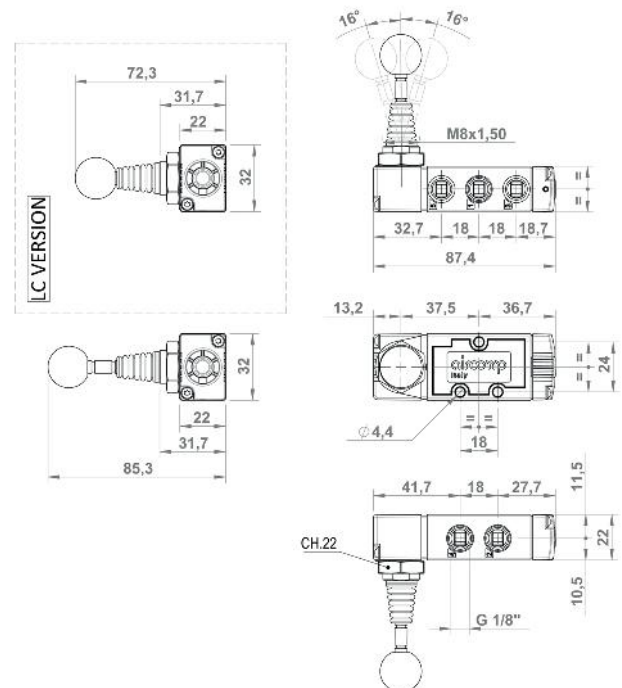
	CODE	REFERENCES
	1202325005	VM 1/8" 22 5 L9 ML OO P
	1202325006	VM 1/8" 22 5 L9 BS OO P
	1202326007	VM 1/8" 22 6 L9 ST CC P
	1202326008	VM 1/8" 22 6 L9 ST CA P
	1202326009	VM 1/8" 22 6 L9 ST CP P
	1202326010	VM 1/8" 22 6 L9 RC CC P
	1202326011	VM 1/8" 22 6 L9 RC CA P
	1202326012	VM 1/8" 22 6 L9 RC CP P

TECHNICAL DATA

Working pressure 0÷10 Bar (0÷1,00 MPa)

Weight 0,101 kg

Note: for LC version, please contact our Sales Dept.



LINE 120 VM 1/8" | MANUAL VALVES

3/2 AXIAL LEVER VALVES

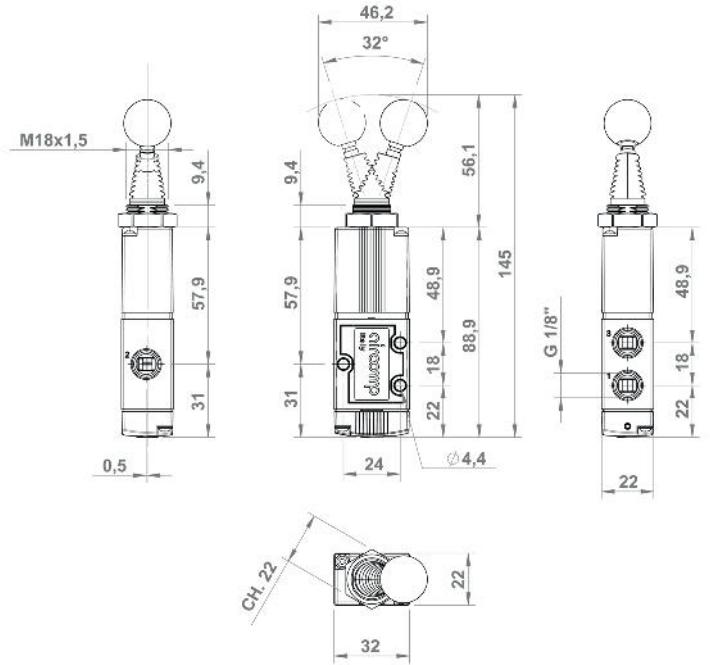


	CODE	REFERENCES
	1202323004	VM 1/8" 22 3 LV ML NC P
	1202323005	VM 1/8" 22 3 LV BS OO P

TECHNICAL DATA

Working pressure 0÷10 Bar (0÷1,00 MPa)

Weight 0,094 kg



5/2 - 5/3 AXIAL LEVER VALVES

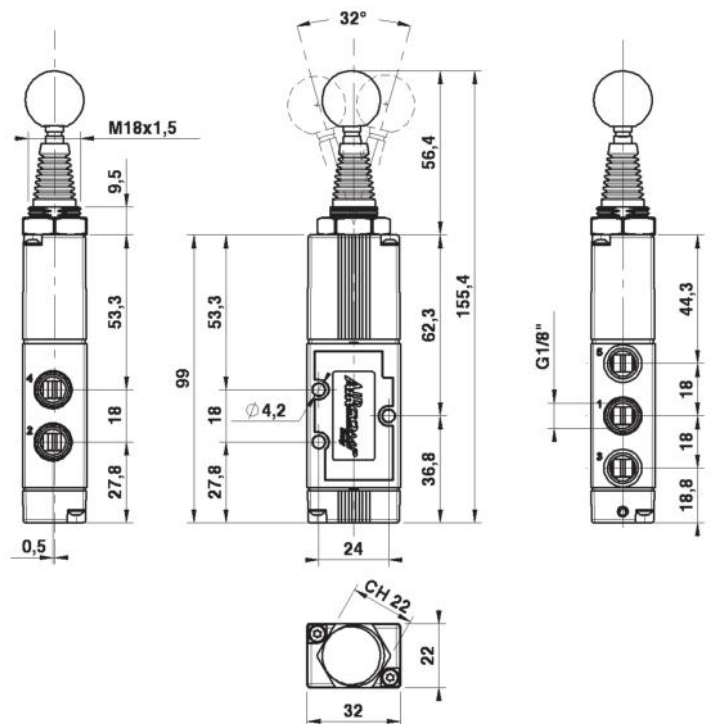


	CODE	REFERENCES
	1202325003	VM 1/8" 22 5 LV ML OO P
	1202325004	VM 1/8" 22 5 LV BS OO P
	1202326001	VM 1/8" 22 6 LV ST CC P
	1202326002	VM 1/8" 22 6 LV ST CA P
	1202326003	VM 1/8" 22 6 LV ST CP P
	1202326004	VM 1/8" 22 6 LV RC CC P
	1202326005	VM 1/8" 22 6 LV RC CA P
	1202326006	VM 1/8" 22 6 LV RC CP P

TECHNICAL DATA

Working pressure 0÷10 Bar (0÷1,00 MPa)

Weight 0,099 kg



LINE 120 VM 1/8" | MANUAL VALVES

3/2 DETENTED PUSH-PULL OPERATED VALVES

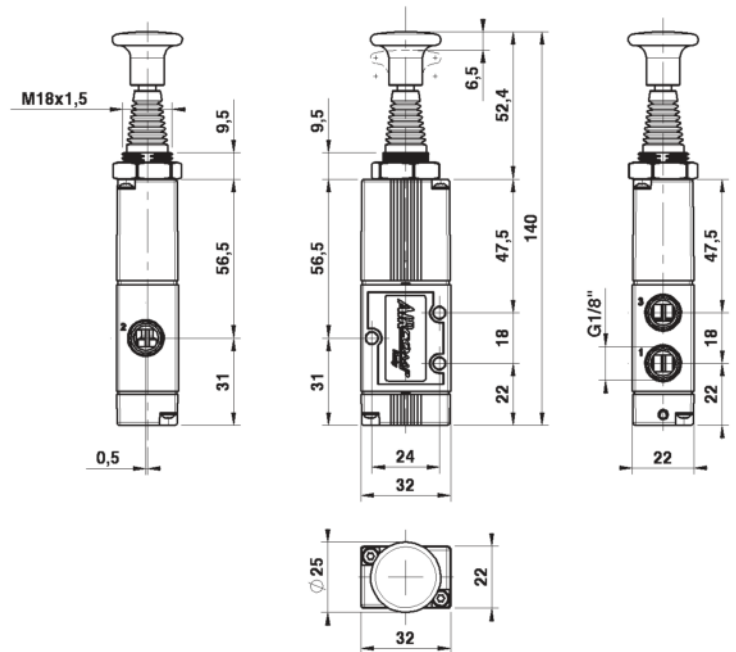


	CODE	REFERENCES
	1202323001	VM 1/8" 22 3 TA ML NC P
	1202323002	VM 1/8" 22 3 TA BS OO P

TECHNICAL DATA

Working pressure 0÷10 Bar (0÷1,00 MPa)

Weight 0,093 kg



5/2 - 5/3 DETENTED PUSH-PULL OPERATE VALVES

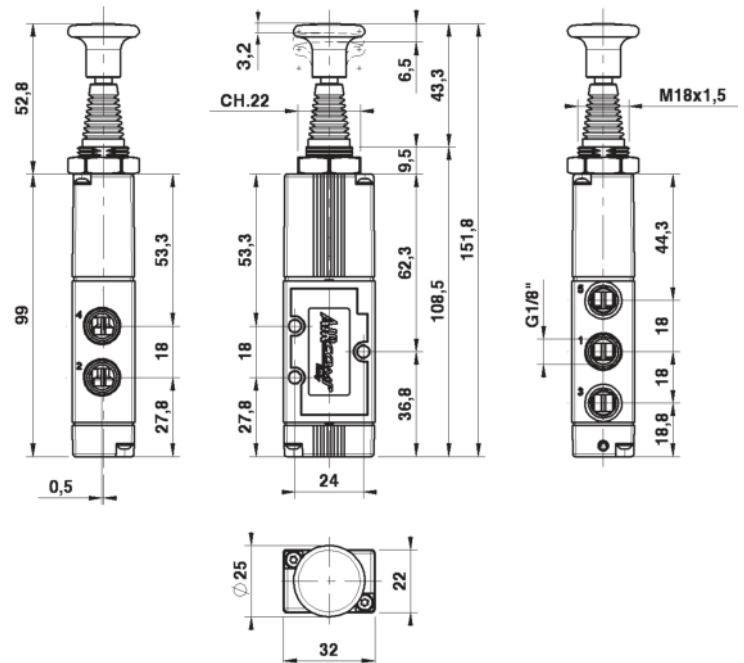


	CODE	REFERENCES
	1202325001	VM 1/8" 22 5 TA ML OO P
	1202325002	VM 1/8" 22 5 TA BS OO P
	1202326013	VM 1/8" 22 6 TA RC CC P
	1202326014	VM 1/8" 22 6 TA RC CA P
	1202326015	VM 1/8" 22 6 TA RC CP P

TECHNICAL DATA

Working pressure 0÷10 Bar (0÷1,00 MPa)

Weight 0,100 kg



LINE 120 VM 1/8" | MANUAL VALVES

3/2 SHORT PUSH-PULL VALVE

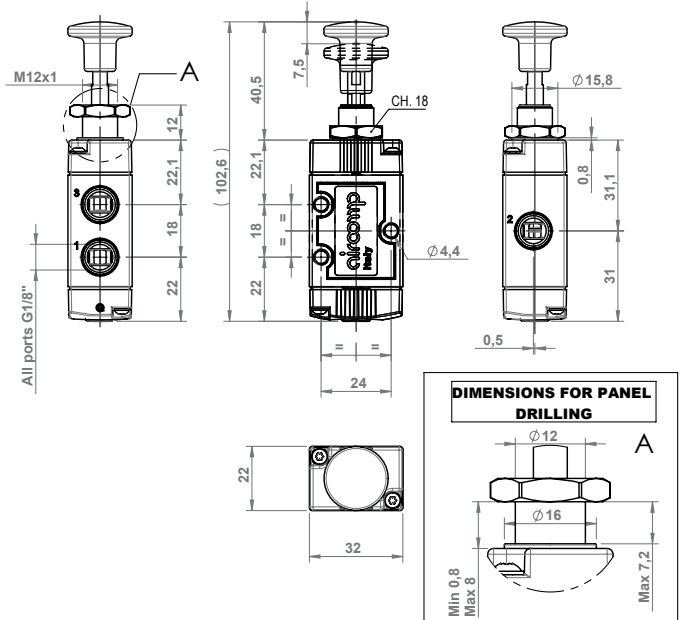


	CODE	REFERENCES
	1202323010	VM 1/8" 22 3 TCA ML NC P
	1202323011	VM 1/8" 22 3 TCA BS OO P

TECHNICAL DATA

Working pressure 0±10 bar (0±1,00 Mpa)

Weight 0,076 kg



5/2 SHORT PUSH-PULL VALVE

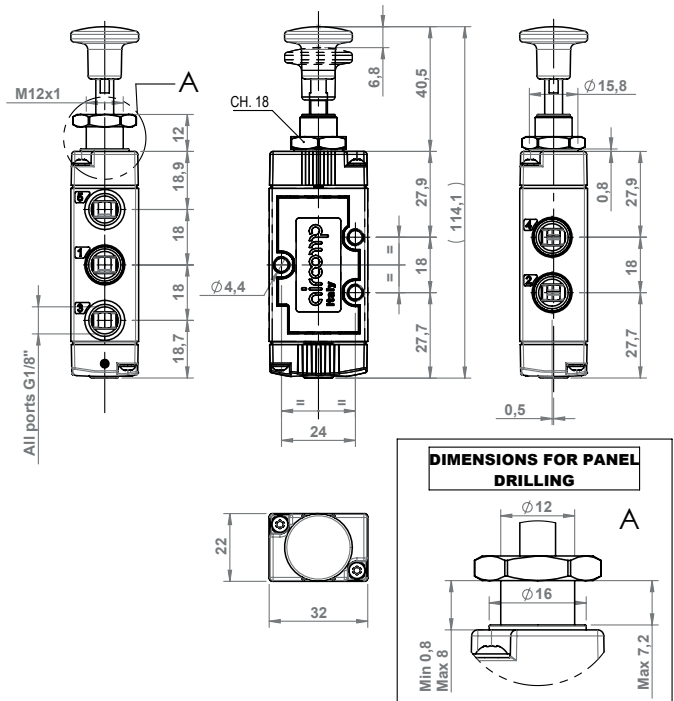


	CODE	REFERENCES
	1202325017	VM 1/8" 22 5 TCA ML OO P
	1202325018	VM 1/8" 22 5 TCA BS OO P

TECHNICAL DATA

Working pressure 0±10 bar (0±1,00 Mpa)

Weight 0,085 kg



LINE 120 ME 1/8" | MANUAL VALVES

3/2 SENSIBLE PUSH LEVER VALVES

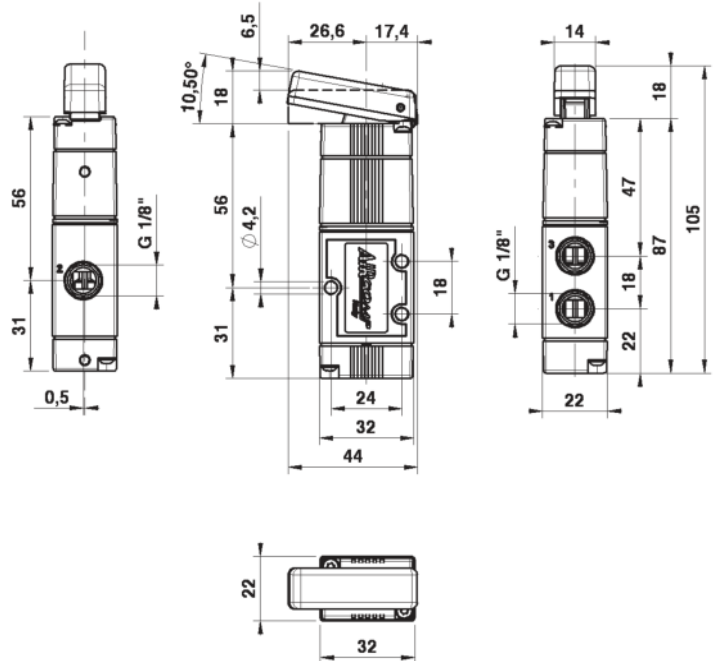


	CODE	REFERENCES
	1202523011	ME 1/8" 22 3 LS PM NC P
	1202523012	ME 1/8" 22 3 LS PM NO P

TECHNICAL DATA

Working pressure 1÷10 Bar (0,1÷1,00 MPa)

Weight 0,080 kg



5/2 SENSIBLE PUSH LEVER VALVES



	CODE	REFERENCES
	1202525006	ME 1/8" 22 5 LS PM OO P

TECHNICAL DATA

Working pressure 1÷10 Bar (0,10÷1,00 MPa)

Weight 0,087 kg

Note. For LC versions please contact our Sales Department

