

LINE 039 1/8"-1/4" | PRESSURE REGULATORS

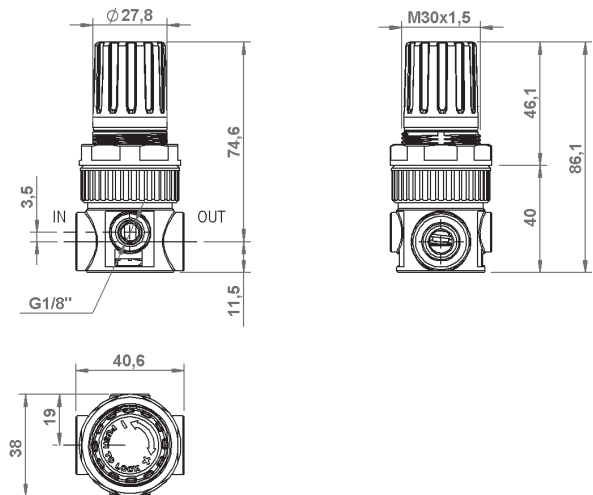
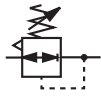
AIR PREPARATION

VALVES

CYLINDERS

FITTINGS

WATER PREPARATION



GENERAL FEATURES

High performance microregulator with balanced valve for guaranteeing great stability even upon variation of the upstream pressure and low load loss.

Relieving for a quick exhaust of the upstream overpressure.

Knob with pressure locking device.

Equipped with nut and nr. 1 plug.

GENERAL TECHNICAL DATA

Pressure range	0-2; 0-4; 0-8; 0-12 Bar
Maximum inlet pressure	16 Bar
Reference flow rate (P1= 6,3 bar ΔP= 1 bar)	900 NI/min
Working temperature (a 10 bar)	-5 / +50°C*
Max. torque inserts G1/8" IN-OUT	20 Nm
Max Torque G1/4" IN-OUT	25 Nm
Max torque gauge port	1 Nm
Weight	0,100 kg

Below 3°C the air of the circuit must be free from humidity

ORDERING CODE

CODE	REF.
039.00.00001	MR 1/8" 039 02 R
039.00.00002	MR 1/8" 039 04 R
039.00.00003	MR 1/8" 039 08 R
039.00.00004	MR 1/8" 039 12 R
039.00.00401	MR 1/4" 039 02 R
039.00.00402	MR 1/4" 039 04 R
039.00.00403	MR 1/4" 039 08 R
039.00.00404	MR 1/4" 039 12 R

USED MATERIALS

- | | |
|-------------------------|---------------------------------|
| 1. Diaphragm pin - POM | 7. Plug - POM |
| 2. Relieving seal - NBR | 8. Valve spring - INOX AISI 316 |
| 3. Valve sealing - NBR | 9. Inserts - BRASS OT58 |
| 4. Regulator body - POM | 10. Valve body - BRASS OT58 |
| 5. O-Ring plug - NBR | 11. Diaphragm - NBR |
| 6. O-Ring valve - NBR | |

For the non-relieving models please go to Water preparation section.

