

LINE 039 1/4" INOX | WATER REGULATORS WITH CERTIFIED MATERIALS

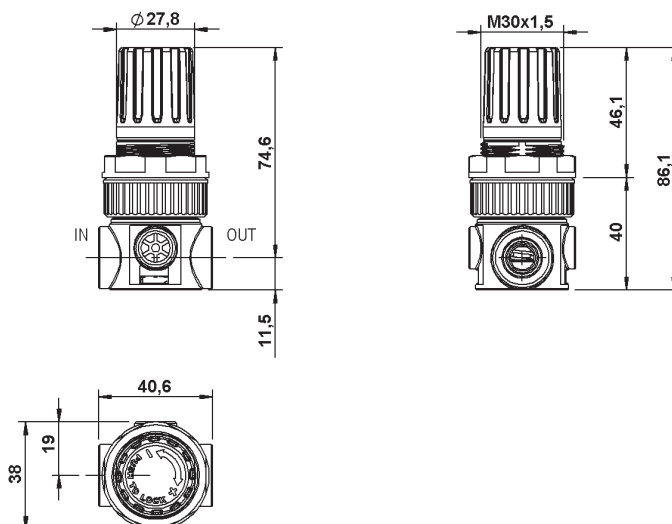
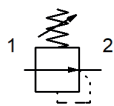
AIR PREPARATION

VALVES

CYLINDERS

FITTINGS

WATER PREPARATION



GENERAL FEATURES

Pressure regulator for liquids realized with certified materials.
Metal components in contact with fluid made in AISI 316L stainless steel.

Balanced valve.

Non relieving version for liquids application.

Konob with pressure locking device.

GENERAL TECHNICAL DATA

Pressure range	0-2; 0-4; 0-8; 0-12 Bar
Maximum inlet pressure	16 bar
Water Reference Flow rate	(P1= 6,3 bar) : P= 1bar : 7 NI/min
Working temperature max (a 10 bar)	+50°C
Fluid max. temperature (water)	+23°C
2-way body without gauge ports	
Max Torque G1/8" IN-OUT	20 Nm
Max Torque G1/4" IN-OUT	25 Nm
Weight	0,100 Kg

ORDERING CODE

CODE	REF.
039.00.00227	MR 1/8" 039 02A INOX 2V FG
039.00.00228	MR 1/8" 039 04A INOX 2V FG
039.00.00229	MR 1/8" 039 08A INOX 2V FG
039.00.00230	MR 1/8" 039 12A INOX 2V FG
039.00.00272	MR 1/4" 039 02A INOX 2V FG
039.00.00243	MR 1/4" 039 04A INOX 2V FG
039.00.00238	MR 1/4" 039 08A INOX 2V FG

USED MATERIALS

- | | |
|---------------------------------|--|
| 1. Diaphragm pin - POM* | 6. Plug - POM* |
| 2. Valve sealing - EPDM* | 7. Valve spring - INOX AISI 316 |
| 3. Regulator body - POM* | 8. Inserts - INOX AISI 316 |
| 4. O-Ring plug - NBR* | 9. Valve body - INOX AISI 316 |
| 5. O-Ring valve - NBR* | 10. Diaphragm - EPDM + Nylon* |

*All materials in contact with fluid are certified.

For more information please contact our sales department.

