

LINE 042 1/4" | MODULAR REGULATORS

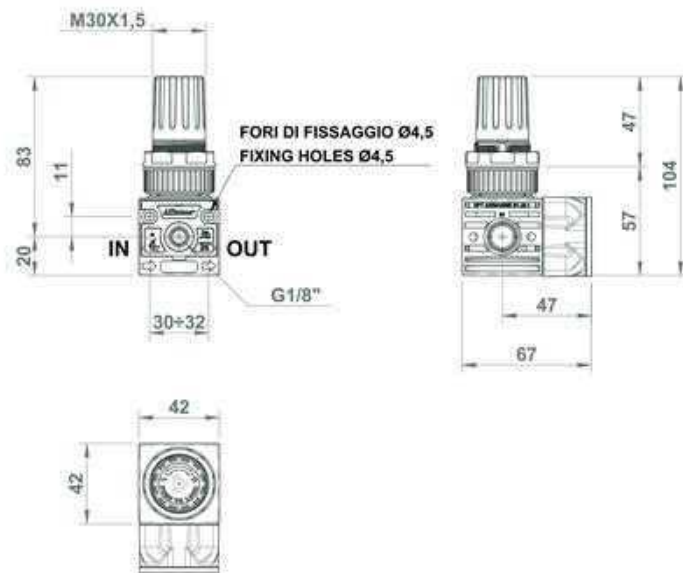
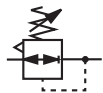
AIR PREPARATION

VALVES

CYLINDERS

FITTINGS

WATER PREPARATION



GENERAL FEATURES

Modular regulator with balanced valve which ensures big flow rate and low load loss.

Relieving for a quick exhaust of the downstream overpressure.

Knob with pressure locking device.

Equipped with nut and nr. plug.

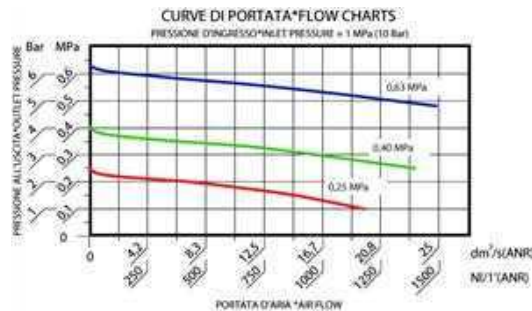
GENERAL TECHNICAL DATA

Pressure range	0-4; 0-8; 0-12 Bar
Maximum inlet pressure	16 Bar
Reference flow rate (P1= 6,3 bar ΔP= 1 bar)	1.200 NI/min
Working temperature (a 10 bar)	-5 / +50°C*
Max Torque G1/4" IN-OUT	25 Nm
Max tourque gauge port	round gauge: 1 Nm compact gauge: manual
Weight	0,125 kg

Below 3°C the air of the circuit must be free from humidity

ORDERING CODE

CODE	REF.
042.01.00004	R 1/4" 042 04 R
042.01.*****	R 1/4" 042 08 R
042.01.00006	R 1/4" 042 12 R



For the non-relieving models please go to Water preparation section.

GUIDE TO REFERENCES

R 1/4" 042 08 R LK

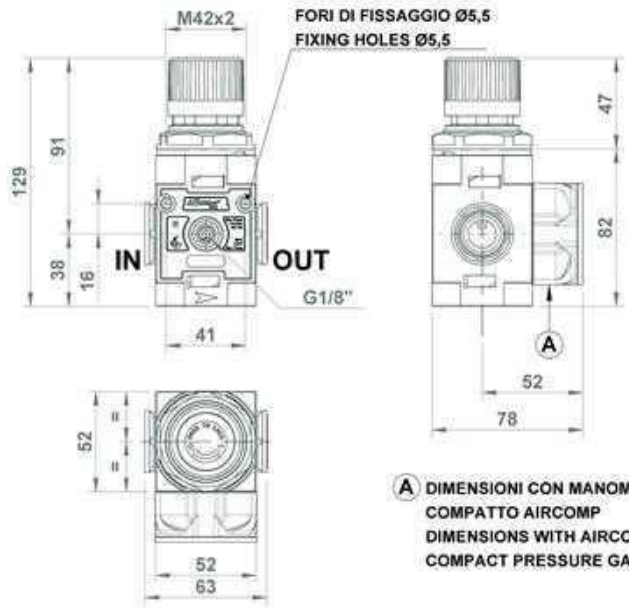
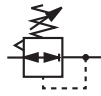
Product R = Regulator	Special type LK = Lockable
Connection 1/4" = G 1/4" 3/8" = G 3/8" 1/2" = G 1/2" 3/4" = G 3/4" 1" = G 1"	Version = Standard B = For battery
Line 042 050 052 075 080 095	Version R = Relieving
	Range of pressure 04 = 0 - 4 Bar 08 = 0 - 8 Bar 12 = 0 - 12 Bar



WOULD YOU LIKE TO ORDER THE REGULATOR COMPLETE WITH GAUGE?
Replace 0 with "M" the the 6th digit of the part nr. for example:

042.01.M0004 R 1/4" 042 04R + GAUGE

LINE 050 3/8-052 1/2 | MODULAR REGULATORS



A DIMENSIONI CON MANOMETRO COMPATTO AIRCOMP
DIMENSIONS WITH AIRCOMP COMPACT PRESSURE GAUGE

GENERAL FEATURES

Modular regulator with balanced valve which ensures big flow rate and low load loss.

Relieving for a quick exhaust of the downstream overpressure.

Knob with pressure locking device.

Equipped with nut and nr. plug.

GENERAL TECHNICAL DATA

INLET-OUTLET connections	Line 050 3/8" - Line 052 1/2"
Pressure range	0-4; 0-8; 0-12 Bar
Working pressure	0,5 - 12,5 Bar
Reference flow rate (P1= 6,3 bar ΔP= 1 bar)	2.100 NI/min
Working temperature (a 10 bar)	-5 / +50°C*
Max Torque IN-OUT	3/8" 60 Nm - 1/2" 80 Nm
Max torque gauge port	round: 10 Nm compact: manual
Weight	0,325 kg

Below 3°C the air of the circuit must be free from humidity

ORDERING CODE

LINE 050-3/8

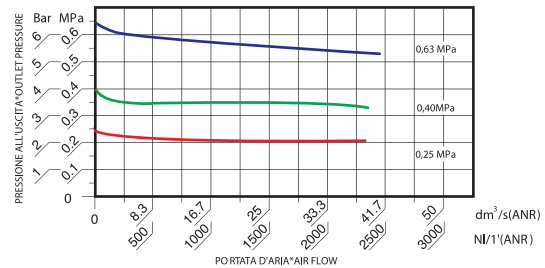
CODE	REF.
050.11.00004	R 3/8" 050 04 R
050.11.****	R 3/8" 050 08 R
050.11.00001	R 3/8" 050 12 R

LINE 052-1/2

CODE	REF.
052.11.00004	R 1/2" 052 04 R
052.11.****	R 1/2" 052 08 R
052.11.00001	R 1/2" 052 12 R

CURVE DI PORTATA *FLOW CHARTS

PRESSIONE D'INGRESSO*INLET PRESSURE = 1 MPa(10 Bar)



GUIDE TO REFERENCES

R 1/4" 042 08 R

Product R = Regulator	Special type LK = Lockable
Connection 1/4" = G 1/4" 3/8" = G 3/8" 1/2" = G 1/2" 3/4" = G 3/4" 1" = G 1"	Version = Standard B = For battery
Line 042 050 052 075 080 095	Version R = Relieving
	Range of pressure 04 = 0 - 4 Bar 08 = 0 - 8 Bar 12 = 0 - 12 Bar

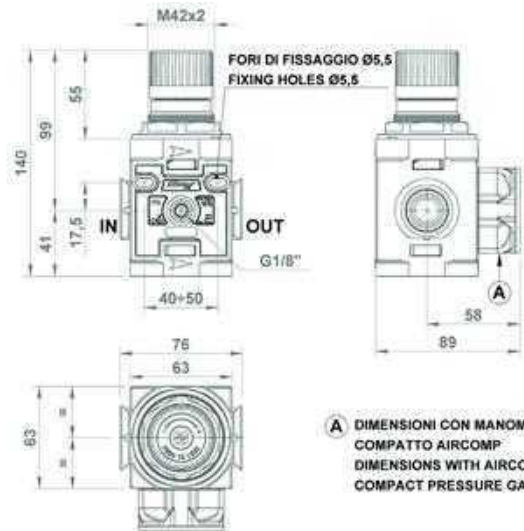
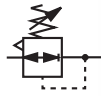


WOULD YOU LIKE TO ORDER THE REGULATOR COMPLETE WITH GAUGE?

Replace 0 with "M" the 6th digit of the part nr. for example:

050.11.**M**0004 R3/8" 050 04R + GAUGE

LINE 075 1/2 | MODULAR REGULATORS



A DIMENSIONI CON MANOMETRO COMPATTO AIRCOMP
DIMENSIONS WITH AIRCOMP COMPACT PRESSURE GAUGE

GENERAL FEATURES

Modular regulator with balanced valve which ensures big flow rate and low load loss.

Relieving for a quick exhaust of the downstream overpressure.

Knob with pressure locking device.

Equipped with nut and nr. plug.

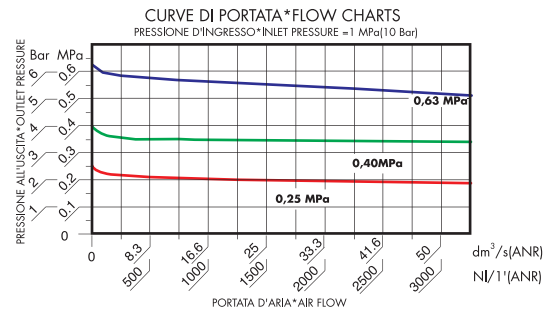
GENERAL TECHNICAL DATA

INLET-OUTLET connections	1/2"
Pressure range	0-4; 0-8; 0-12 Bar
Working pressure	0,5 - 12,5 Bar
Reference flow rate (P1= 6,3 bar P= 1bar)	2.880 NI/min
Max Torque IN OUT	1/2" 80 Nm
Working temperature (a 10 bar)	-5 / +50°C*
Max Torque IN-OUT	1/2" 80 Nm
Max torque gauge port	round: 10 Nm compact: manual
Weight	0,435 kg

Below 3°C the air of the circuit must be free from humidity

ORDERING CODE

CODE	REF.
075.11.00003	R 1/2" 075 04 R
075.11.*****	R 1/2" 075 08 R
075.11.00002	R 1/2" 075 12 R



GUIDE TO REFERENCES

R 1/4" 042 08 R

Product R = Regulator	Special type LK = Lockable
Connection 1/4" = G 1/4" 3/8" = G 3/8" 1/2" = G 1/2" 3/4" = G 3/4" 1" = G 1"	Version = Standard B = For battery
Line 042 050 052 075 080 095	Version R = Relieving
	Range of pressure 04 = 0 - 4 Bar 08 = 0 - 8 Bar 12 = 0 - 12 Bar



WOULD YOU LIKE TO ORDER THE REGULATOR COMPLETE WITH GAUGE?

Replace 0 with "M" the the 6th digit of the part nr. for example:

075.11.M0003 R 1/2" 075 04 R + GAUGE

LINE 095 1" | MODULAR REGULATORS

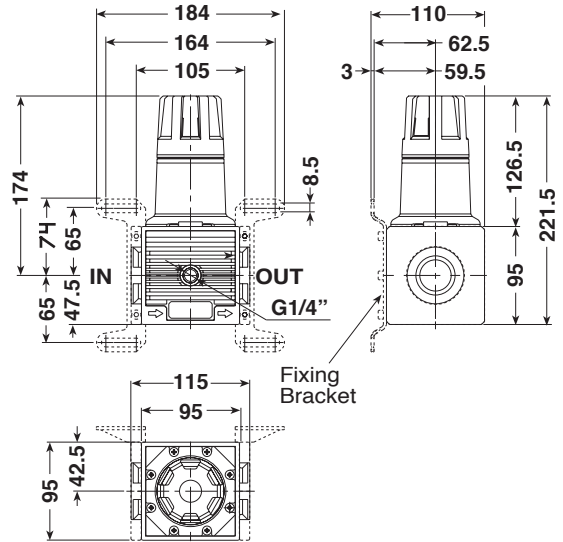
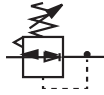
AIR PREPARATION

VALVES

CYLINDERS

FITTINGS

WATER PREPARATION



GENERAL FEATURES

Modular Regulator with balanced valve ensuring high performance and low load loss.

Relieving for a quick exhaust of the downstream overpressure.

Knob with locking pressure device.

Equipped with nr. 1 plug.

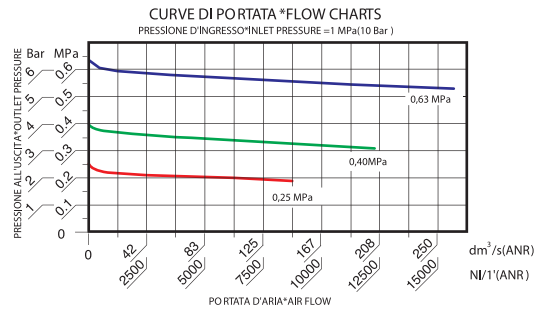
GENERAL TECHNICAL DATA

INLET-OUTLET connections	1"
Pressure range	0-4; 0-8; 0-12 Bar
Working pressure	0,5 - 12,5 Bar
Reference flow rate (P1= 6,3 bar P= 1bar)	15.000 NI/min
Working temperature (a 10 bar)	-5 / +50°C*
Max Torque IN-OUT	1" 80 Nm
Max torque gauge port	10 Nm
Weight:	1,721 Kg

Below 3°C the air of the circuit must be free from humidity

ORDERING CODE

CODE	REF.
095.01.00002	R 1" 095 04 R
095.01.00001	R 1" 095 08 R
095.01.00003	R 1" 095 012 R



GUIDE TO REFERENCES

R 1/4" 042 08 R

Product
R = Regulator

Connection
1/4" = G 1/4"
3/8" = G 3/8"
1/2" = G 1/2"
3/4" = G 3/4"
1" = G 1"

Line
042
050
052
075
080
095

Version
R = Relieving

Range of pressure
04 = 0 - 4 Bar
08 = 0 - 8 Bar
12 = 0 - 12 Bar



WOULD YOU LIKE TO ORDER
THE REGULATOR COMPLETE WITH GAUGE?

Replace O with "M" the the 6th digit of the part nr. for example:

095.01.M0002 R 1" 095 04 R + GAUGE